

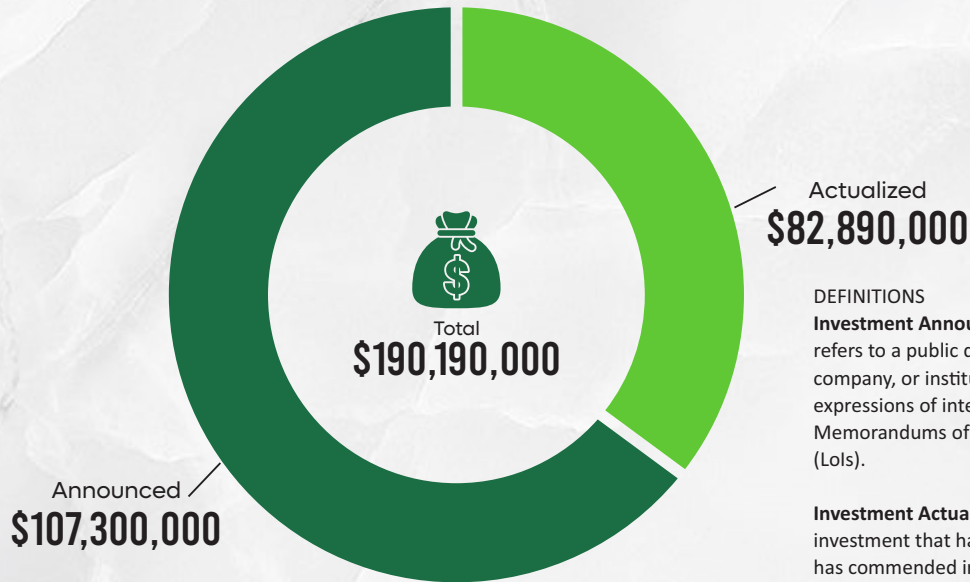


# REPORT OF INVESTMENTS IN PLATEAU STATE, NIGERIA

JANUARY-DECEMBER 2025

*This report focuses solely on investments recorded by PS-OSIC between January to December 2025 of all investments realized in Plateau State during this period.*

# Total Investment Inflow




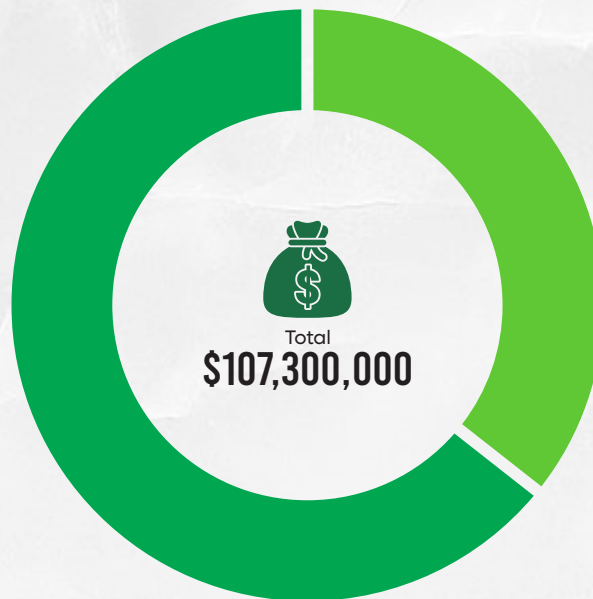
## DEFINITIONS


**Investment Announcement:** An Investment Announcement refers to a public declaration or commitment by an investor, company, or institution to invest in Plateau State. This includes expressions of intent made or official agreements such as Memorandums of understanding (MoUs) and letters of Intent (LoIs).

**Investment Actualized:** An investment Actualized refers to an investment that has moved beyond the announcement stage and has commenced implementation. This includes investments where financial commitments have been deployed, business operations have commenced, construction has begun, or capital expenditures have been made within the State.


# Announced Investments By Sectors

  
Energy  
**\$107,300,000**  
87.6%



  
ICT  
**\$13,300,000**  
12.4%

# Announced Investments By Source

 Total  
**\$107,300,000**  
100%



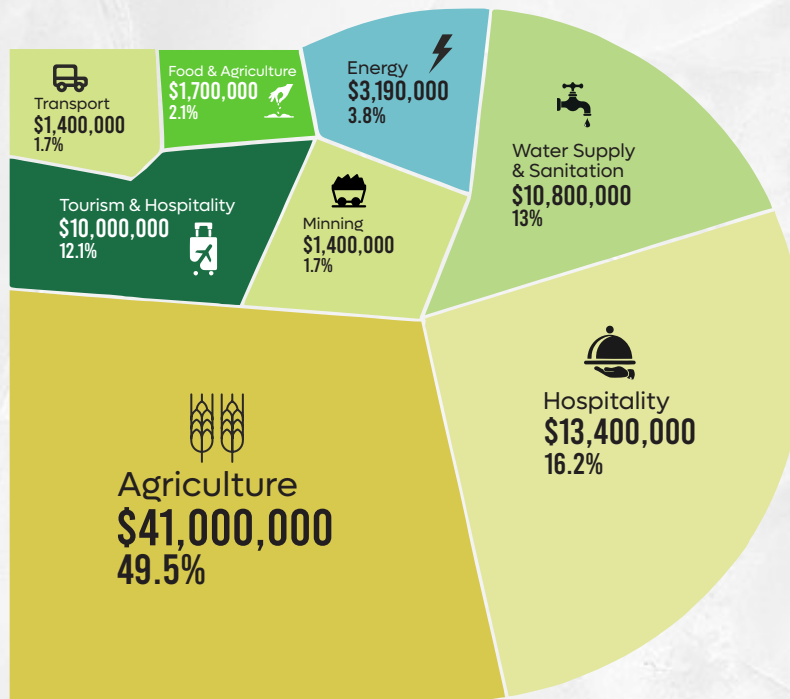
DDI  
**\$107,300,000**  
100% 100%

FDI  
**\$0**  
0%

# Announced Investments By Sectors



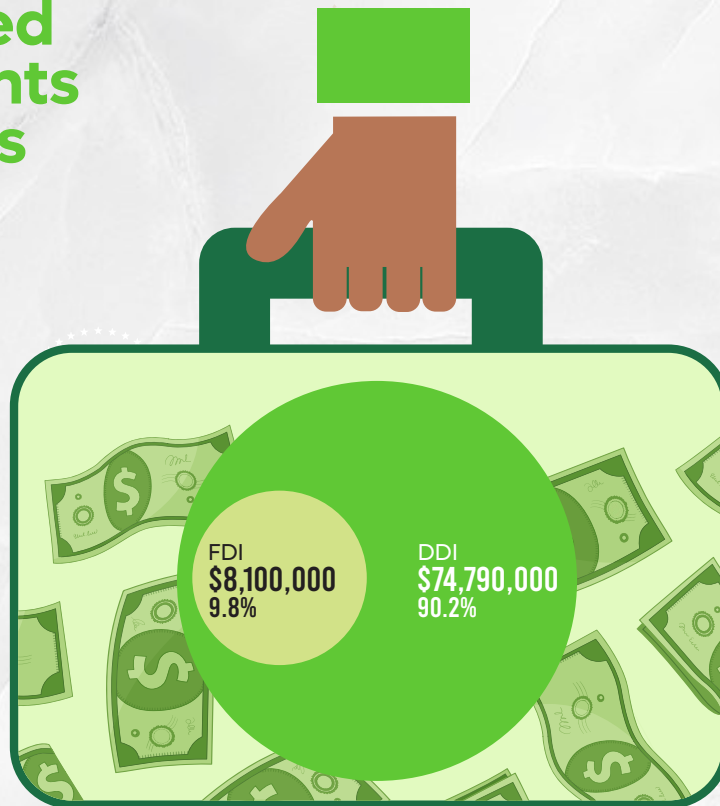
**\$82,890,000**



# Announced Investments By Sectors

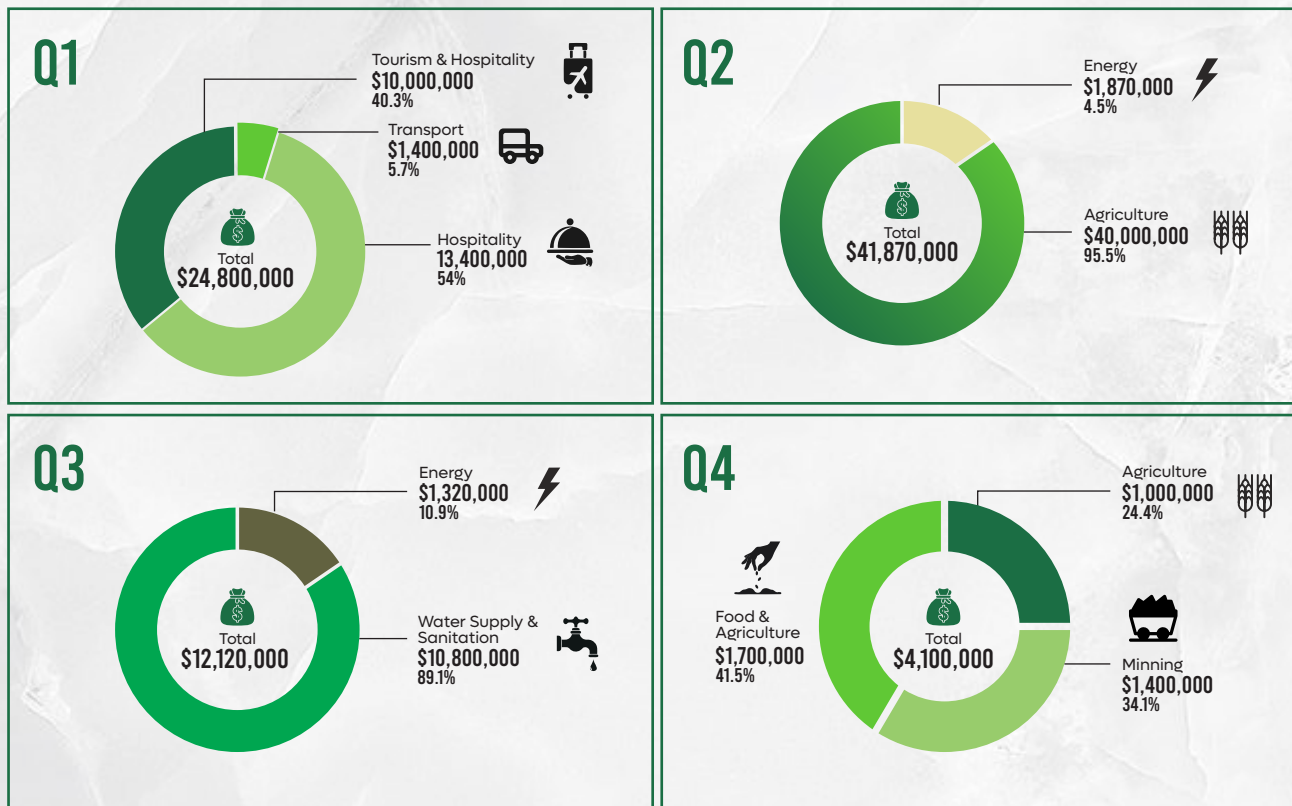


**\$82,890,000**





# Breakdown of Actualized Investments by Quarter

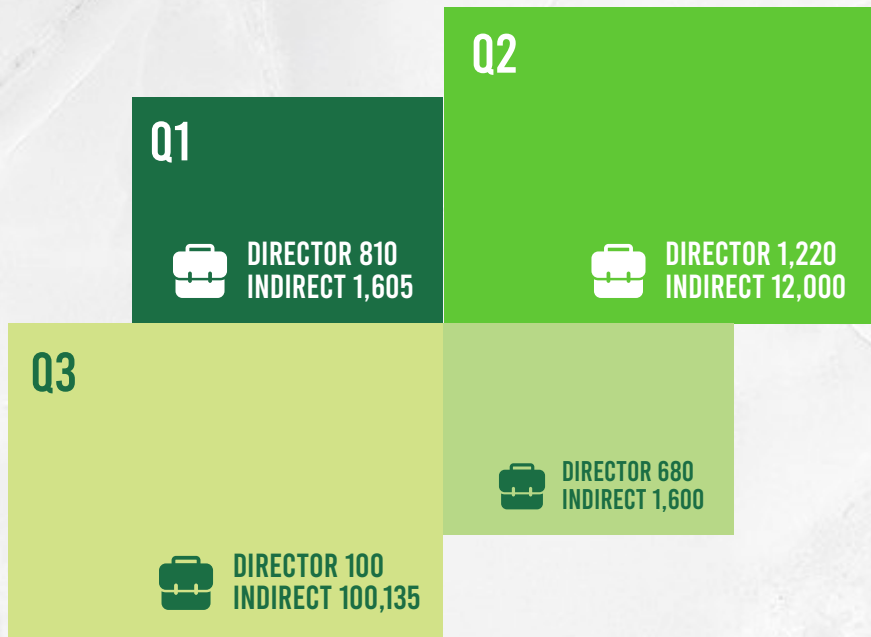


# Actualized Investments by Sector





# Estimated Jobs to be Created from the Actualized Investments



# Top Announced Investments

| S/N | Name of Company/Investor       | Project Description  | Worth of Investment | Sector | Location of Investment/LGA                                       | Estimated direct jobs created | Estimated indirect jobs created | Source | Quarter |
|-----|--------------------------------|--|---------------------|--------|--|-------------------------------|---------------------------------|--------|---------|
|     |                                |  | (\$)                |        |  |                               |                                 |        |         |
| 1   | Quaint Power and Infrastructur | Development of Renewable Energy on Yakubu Gowon , Laminga and Liberty Dams                           | \$50,000,000        | Energy | Jos-South, Jos-North, Pankshin, langtang, Shendam, Bokkos, Bassa | 100                           | 500                             | DDI    | Q2      |
| 2   | Shimankar Valley Limited       | Development 30MW hydropower  | \$32,000,000        | Energy | Pankshin   | 200                           | 10000                           | DDI    | Q1      |
| 3   | Rural Electrification Energy   | Energizing, Health, Education, Agriculture, Rural Communities and Transport in 25 communities of the | \$12,000,000        | Energy | 25 communities in the state                                      | 20000                         | 50000                           | DDI    | Q1      |
| 4   | Solutron Eastern Fibre Limited | Deployment of a high-speed fibre optic broadband network across all 17 LGAs of Plateau State.        | \$13,300,000        | ICT    | 17LGAs   | 100                           | 3000                            | DDI    | Q4      |

# Top Actualized Investments

| S/N                | Name of Company/Investor  | Project Description   | Worth of Investment (\$) |
|--------------------|---|---|--------------------------|
| 1                  | Strom Infrastructure Company Nigeria Limited                        | Revitalization of Hill Station Hotel  | \$6,700,000              |
| 2                  | Aivare Global Concept Ltd   | Remodeling Plateau Hotel  | \$6,700,000              |
| 3                  | NAC Investment Ventures Limited                                     | Development of Plateau State's mineral resources.   | \$1,400,000              |
| 4                  | National Agency for Science and Engineering Infrastructure (NASENI) | Establishment of Food Processing Equipment and Machinery Development Institute(FOPEMDI)   | \$1,000,000              |
| 5                  | Valuejet Aviation Limited   | Establishment of standard ticketing and booking systems to ensure efficient passenger access, smooth operations, and reliable service delivery. | \$1,400,000              |
| 6                  | Jolex Construction Company  | Construction of Road network at the Solomon Lar Amusement Park  | \$10,000,000             |
| 7                  | Fruits & Veggies Global Limited                                     | Potato Production & Processing  | \$1,700,000              |
| 8                  | Transmission Company of Nigeria                                     | Completion of Makeri - Pankshin 132KV Transmission Line   | \$1,000,000              |
| 9                  | Quintunen Intergrated Service Limited                               | Construction of Solar-powered Boreholes   | \$10,800,000             |
| 10                 | Thitarget Limited   | Construction of solar systems in 6 General and Cottage Hospitals  | \$320,000                |
| 11                 | ITCC Limited  | Procurement, delivery and installation of 55 Electrical Transformers  | \$1,870,000              |
| 12                 | RAAMP   | To enhance rural infrastrurcture and agricultural market linkages   | \$40,000,000             |
| <b>Grand Total</b> |   |   | <b>\$82,890,000</b>      |

# Top Actualized Investments contd.

| S/N | Sector                      | Location of Investment/LGA                                     | Estimated direct jobs created | Estimated indirect jobs created | Source | Actualized Investments | Quarter |
|-----|-----------------------------|--|-------------------------------|---------------------------------|--------|------------------------|---------|
| 1   | Hospitality                 | Jos North  | 500                           | 1000                            | FDI    | Actualized             | Q1      |
| 2   | Hospitality                 | Jos North  | 250                           | 500                             | DDI    | Actualized             | Q1      |
| 3   | Minning                     | Jos South  | 80                            | 500                             | FDI    | Actualized             | Q4      |
| 4   | Agriculture                 | Jos-North  | 200                           | 300                             | DDI    | Actualized             | Q4      |
| 5   | Transport                   | Barkin Ladi  | 10                            | 25                              | DDI    | Actualized             | Q1      |
| 6   | Tourism & Hospitality       | Jos North  | 50                            | 80                              | DDI    | Actualized             | Q1      |
| 7   | Food & Agriculture          | Bokkos   | 400                           | 800                             | DDI    | Actualized             | Q4      |
| 8   | Energy                      | Jos South, Barkin Ladi, Mangu and Pankshin                     | 70                            | 100000                          | DDI    | Actualized             | Q3      |
| 9   | Water supply and Sanitation | Mangu  | 10                            | 35                              | DDI    | Actualized             | Q3      |
| 10  | Energy                      | Shendam, Mikan, Quan Pan, Wase, Pankshin, Langtan              | 20                            | 100                             | DDI    | Actualized             | Q3      |
| 11  | Energy                      | Jos North, Jos South, Barkin Ladi, Bassa, Riyom, Mangu, Bokkos | 20                            | 2000                            | DDI    | Actualized             | Q2      |
| 12  | Agriculture                 | Mangu, Shendam and Bassa LGAs                                  | 1200                          | 10000                           | DDI    | Actualized             | Q2      |
|     |                             |  | <b>2810</b>                   | <b>115340</b>                   |        |                        |         |

---

 +234 (0) 702 666 0082  
 [plasipaosic@gmail.com](mailto:plasipaosic@gmail.com)  
 [www.psosic.org](http://www.psosic.org)

---

